



CABRI G2

More safety. More utility. More fun !







Welcome Aboard !

The new generation cockpit





Certification is not bureaucracy. It is the only means for you to be sure that the aircraft design has been validated. In turbulence. In heat. In cold. With vibration. At altitude. To resist lightning. In magnetic radio interference. Following considerable natural aging. And finally to resist all kinds of stress that you and other pilots will, one day or another, inflict on your helicopter.

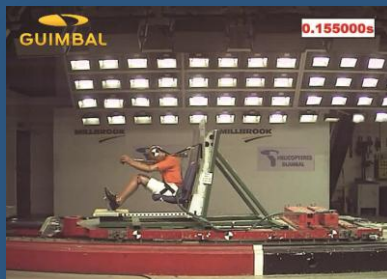
Combines the best of new and proven technologies



The heart of the avionics is the EPM, a dedicated multi-function display monitoring 36 parameters and providing advanced functions such as:

- Smart power indicator
- Engine & Rotor RPM
- Advanced fuel computer
- Automatic carburetor heating
- Transmission chip detectors

The reliable Lycoming engine is fitted with a smart digital governor that gives a turbine-like behaviour, and a state-of-the-art electronic ignition requiring no maintenance. It will start without problems from hot to very cold temperatures.



No compromise has been made regarding the safety features of the Cabri G2.

The high-tech energy absorbing seats and fuel system are there to protect you and your passenger whatever the circumstances, in impacts up to 2000 ft/min.

You will enjoy the level of safety once reserved for heavier and much more expensive turbine helicopters.



The maintenance-free rotor is incredibly strong, amazingly maneuverable and comes with many of inertia for safe, demonstrative and forgiving autorotations.

Fly with confidence in winds and turbulence that would ground most light helicopters.

Fenestron® tail rotor provides excellent maneuverability and safety for people on the ground. Crosswinds and flare become a no-brainer.

Safe & Smart

Flying should not be a sacrifice of your safety !

The 200-liter luggage compartment can accommodate the luggage of two people, including two airline-cabin suitcases. The compartment's shelf is accessible in flight, to hold small items like maps, a sweater or a camera. You can also keep your jacket with you, under the seat. The luggage compartment is readily accessible via a watertight door, locked from the cockpit.

There is also a 20-liter cockpit forward compartment which can accommodate small items, plus the removable passenger side dual-control set.

Innovative rotor head and vibration isolation devices provide a perfectly smooth ride, along with the low noise emission from the exhaust and the Fenestron® tail rotor.



You are used to remote opening/closing of your car door. Why should your helicopter be different ? Forget about keys and use the remote to open and lock-up your Cabri G2.

The Cabri is the first aircraft equipped with a secure keyless entry and anti-theft device.



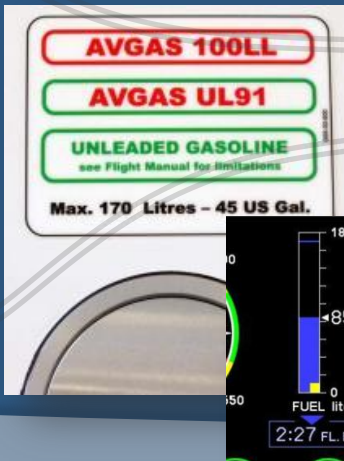


Cabin occupants enjoy a roomy, luxurious, leather-clad cockpit, with perfect all-round visibility and outstanding ergonomics. Rudder pedals can be set instantly to fit your size.

You will feel at home in the Cabri G2, with cup holder, cabin heating, new vents, music input and power outlet to charge your cell phone.

A dual-station electric trim which allows hands-off flight is standard on the Cabri to help you feel as if you are in a much bigger helicopter.

Fly in style !



The Cabri G2 is fully certified to use Unleaded Avgas and Unleaded automotive gasoline (with conditions on the supply).

This unique capability combined with the remarkable 4 ½ hour endurance, help make cross-country traveling a relaxing experience.



You can choose between many different avionics configurations, including moving-map GPS, dual COM, etc. At the top of the range, the new digital PFD/HSI makes the Cabri a perfect glass cockpit IFR trainer.

A unique iPad holder including a certified power supply will fit nicely on either or both sides of the cockpit.





The innovative emergency float installation offers unusual features :

- No change in performance or flight envelope
- Removal / installation in minutes by the pilot thanks to quick-disconnects
- Automatic deployment by high-reliability sensors with manual backup



The cargo hook developed specifically for the Cabri G2 makes possible both utility missions and training, while the main rotor's outstanding maneuverability and the Fenestron® shroud offer greatly enhanced safety

- Maximum lifting capacity : 220 kg
- Very low weight : 1 kg (2.2 lbs)
- Large ground clearance
- Electrical release by Pilot or Instructor with mechanical backup



Fit for your Mission.

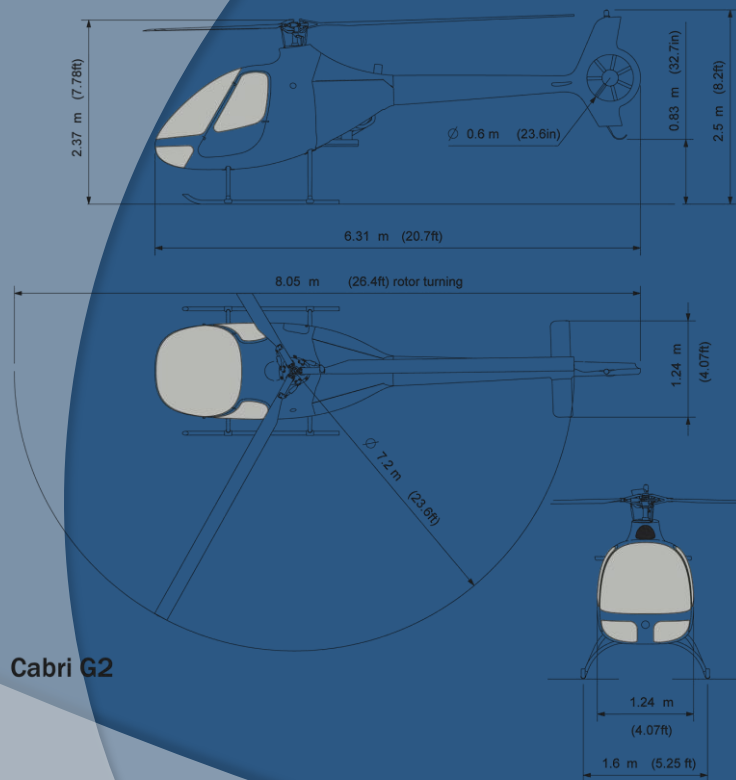


Custom Cabri bearpaws

- No change in the flight envelope (including VNE 130 kt); no change in performance
- Moderate weight : 1.6 kg (3.5 lbs) for the set
- Installation and removal in 5 minutes by the Pilot, helicopter on the ground or on wheels
- No removable attachment hardware – no bolts nor pins to lose
- Strong enough to land in rocks – flexible enough to resist shocks

Bear paws are fully certified as a part of the helicopter and require no change in the flight documentation.

Cabri G2



WEIGHTS

Max Gross Weight	700 kg	1543 lbs
Empty Weight (Std.)	420 kg	926 lbs
Useful Load	280 kg	617 lbs
Cargo Hook capacity	220 kg	485 lbs

PERFORMANCE

Engine	Lycoming O-360 / 180 derated to 160/145 shp	
Max Cruise Speed	100 kt	185 km/h
Cruise Speed	95 kt	176 km/h
VNE (Sea Level)	130 kt	241 km/h
Hover ceiling IGE (MGW, ISA)	5 000 ft	1 524 m
Hover ceiling OGE (154 kg crew + 2 hr fuel)	7 500 ft	2 286 m
Service ceiling	12 500 ft	3 812 m
Max range (15 min reserve)	380 NM	700 km
Certified noise level	75.7 dB SEL	

CAPACITIES

Seating	2 crashworthy seats	
Cabin Width	1,24 m	49 in
Luggage	200 litres	7 cu.ft
Fuel Capacity	170 litres	45 US Gal
Approved fuels	AVGAS 100LL & UL91 Automotive UL98 (see Flight Manual)	





HELICOPTERES GUIMBAL
Aerodrome d'Aix en
Provence
1070 rue Lieutenant Parayre
13290 LES MILLES
FRANCE

Tel : +33 (0)4.42.39.10.80

sales@guimbal.com
www.guimbal.com

